

Bladder US Protocol

Purpose: To evaluate the urinary bladder for wall thickening, intraluminal findings or for urinary retention.

<u>Organ</u>	<u>Scan Plane</u>	
Bladder	Longitudinal	Right Lateral/Midline and Left Lateral Measure Height
	Transverse	Fundus/Mid/Base Measure Width and Depth
**Images with and without color Doppler of any abnormality to include Cine Sweep & Measurements		
Prostate	Longitudinal	Measure Height
	Transverse	Measure Width and Depth
Doppler		Right and Left Ureteral Jets Any abnormality
Bladder Volumes		Measure and calculate pre-void bladder volume Have patient void. Re-measure and calculate post-void volume.

****Report Package**** to be used for measurements

Calculate Bladder Volume:

Height x Width x Length x 0.7

The Width and Depth of the bladder are measured in Transverse

The Height is measured in Longitudinal

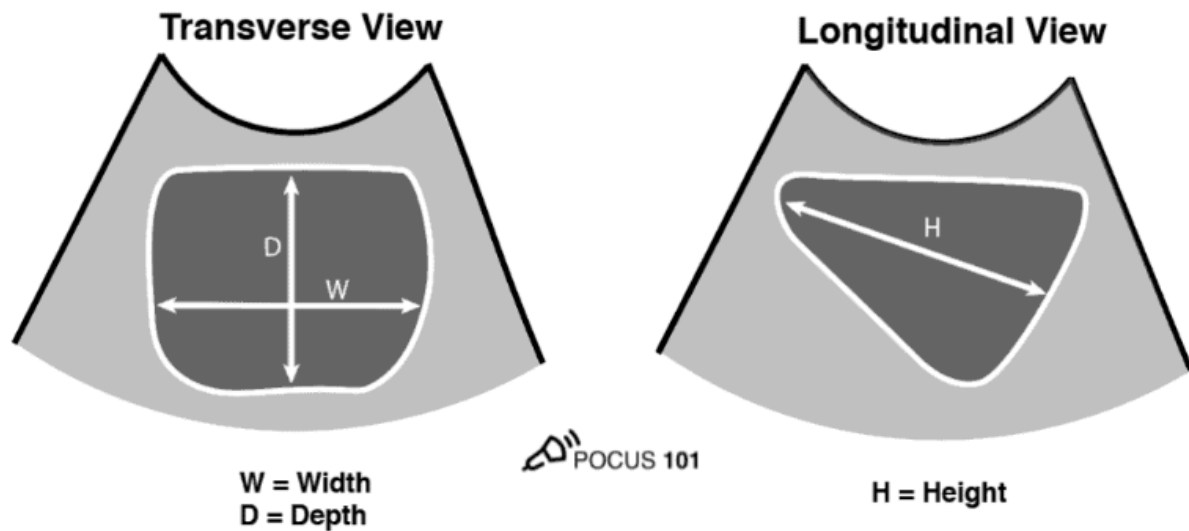
*****Bladder Volume should be less than 300-400 mL in healthy adults

*****Post Void Residual (PVR) should be less than 50-100mL and bladder

Should be emptied before assessment

Re-image each kidney to document persistent or resolution of hydronephrosis (if present on pre-void).

$$\text{Bladder Volume} = \text{Width} \times \text{Depth} \times \text{Height} \times 0.7^*$$



*0.7 is the correction coefficient. This value depends on the shape of the bladder